

**Proviso Math and Science Academy**  
**Proviso Twp HSD 209**  
**Forest Park, ILLINOIS**



**ILLINOIS**  
**SCHOOL**  
**REPORT**  
**CARD**

**GRADES : 9 10 11 12**

State and federal laws require public school districts to release report cards to the public each year.

This year, we have updated the report card to provide a full picture of school performance beyond just test scores. A display of this data designed with parents and communities in mind is available on [illinoisreportcard.com](http://illinoisreportcard.com). All of the metrics posted on [illinoisreportcard.com](http://illinoisreportcard.com) are also included in this report.

**STUDENTS**

RACIAL/ETHNIC BACKGROUND AND OTHER INFORMATION												
	White	Black	Hispanic	Asian	Native Hawaiian /Pacific Islander	American Indian	Two or More Races	Percent Low-Income	Percent Limited-English-Proficient	Percent IEP	Percent Homeless	Total Enrollment
<b>School</b>	6.1	30.1	59.5	3.1	0.4	0.1	0.7	47.4	0.0	0.7	0.0	740
<b>District</b>	2.6	46.0	49.3	1.0	0.2	0.2	0.5	49.7	11.1	16.8	2.1	4,614
<b>State</b>	48.8	17.3	25.5	4.7	0.1	0.3	3.2	49.9	10.5	14.3	2.2	2,041,779

**Low-income** students come from families receiving public aid; live in institutions for neglected or delinquent children; are supported in foster homes with public funds; or are eligible to receive free or reduced-price lunches. IEP Students are those students eligible to receive special education services.

**Limited-English-proficient** students are those students eligible for transitional bilingual programs. **Total Enrollment** is based on Home School.

**Homeless** students are who do not have permanent and adequate homes.

	High Sch. Dropout Rate	Chronic Truancy Rate	Mobility Rate	Attendance Rate
<b>School</b>	0.1	0.7	0.8	95.2
<b>District</b>	4.0	20.5	13.2	82.2
<b>State</b>	2.0	9.8	12.2	94.4

**Mobility rate** is based on the number of times students enroll in or leave a school during the school year.

**Chronic truants** are students who are absent from school without valid cause for 9 or more of the last 180 school days.

**INSTRUCTIONAL SETTING**

PARENTAL CONTACT*	
	Percent
<b>School</b>	99.2
<b>District</b>	84.7
<b>State</b>	95.3

TOTAL SCHOOL DAYS	
	Days
<b>School</b>	176
<b>District</b>	176
<b>State</b>	175

8TH GRADERS PASSING ALGEBRA I **	
<b>School</b>	
<b>District</b>	
<b>State</b>	28.4

\*\* For the 8th graders passing algebra I, if the percentage is 0, it means that an Algebra I course is not offered.

\* Parental contact includes parent-teacher conferences, parental visits to school, school visits to home, telephone conversations, and written correspondence.

STUDENT-TO-STAFF RATIOS			
Pupil-Teacher Elementary	Pupil-Teacher Secondary	Pupil-Certified Staff	Pupil-Administrator
--	--	--	--
	22.1	13.3	101.2
	18.9	11.3	176.5

HEALTH AND WELLNESS (days per week)	
<b>School</b>	5
<b>District</b>	5
<b>State</b>	4

AVERAGE CLASS SIZE (as of the first school day in May)											
Grades	K	1	2	3	4	5	6	7	8	9 - 12	Overall
School										25.4	25.4
District										19.9	19.9
State										19.0	21.1

TEACHER INFORMATION (Full-Time Equivalents)												
	White	Black	Hispanic	Asian	Native Hawaiian/ Pacific islander	American Indian	Two or More Races	Unknown	Male	Female	Total Number	
District	70.4	20.1	6.3	2.2	0.4	0.0	0.0	0.4	42.5	57.5	223	
State	83.4	6.0	5.7	1.4	0.1	0.2	0.8	2.5	23.3	76.7	127,152	

TEACHER INFORMATION (Continued)			
	Average Teaching Experience (Years)	% of Teachers with Bachelor's Degrees	% of Teachers with Master's & Above
School	--	--	--
District	14.5	22.0	76.7
State	13.1	38.1	61.4

The No Child Left Behind Act requires that information for certain data elements be disaggregated by high- and low-poverty schools. Poverty (low-income) is defined on page 1 of all report cards. High- and low-poverty schools include those in the top and bottom quarters of the poverty distribution of schools in the state.

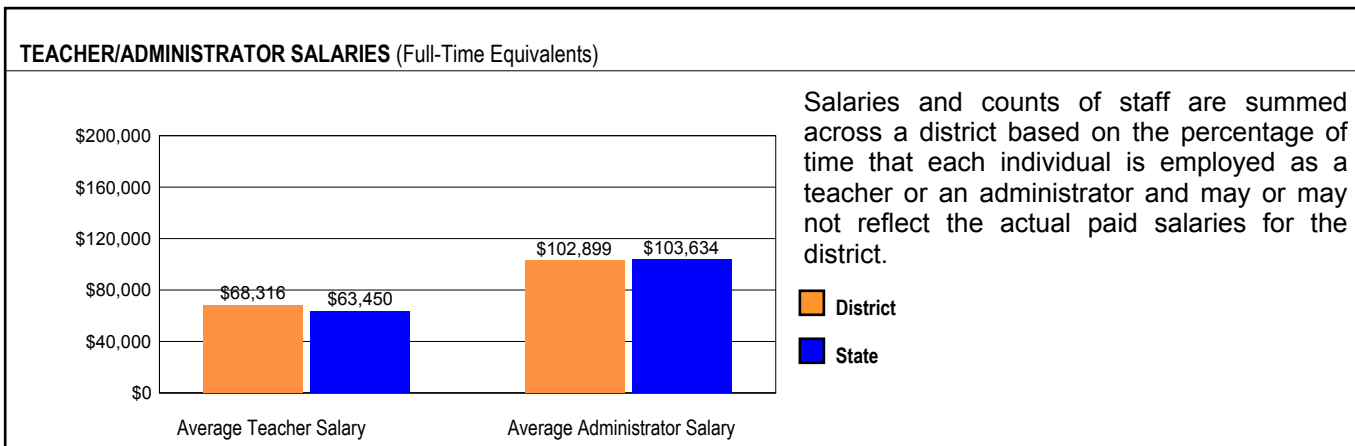
Some teacher/administrator data are not collected at the school level.

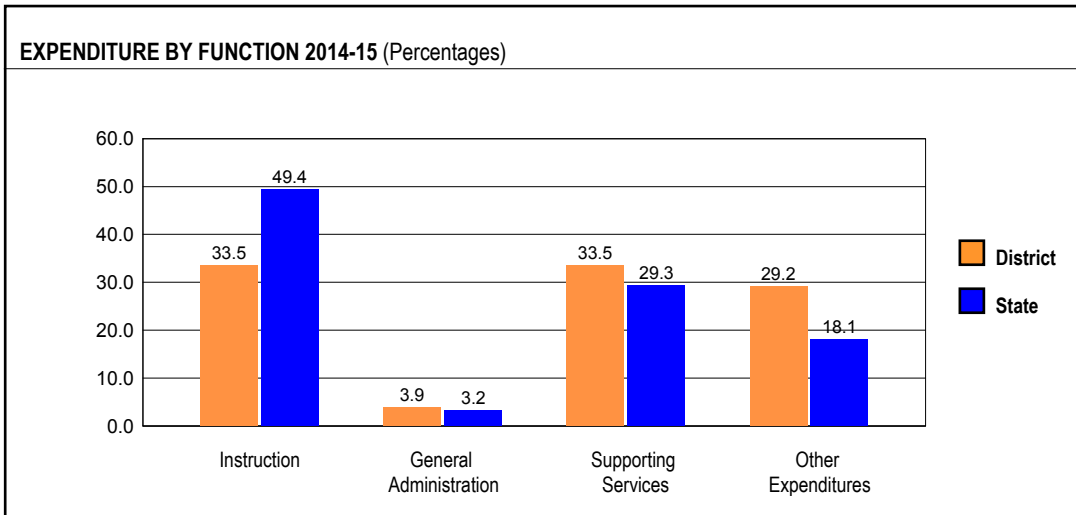
TEACHER RETENTION RATE	
School	85.5
District	81.1
State	85.8

PRINCIPAL TURNOVER (Count)	
School	3.0
District	3.0
State	2.0

TEACHER ATTENDANCE	
School	93.3
District	94.1
State	76.5

## SCHOOL DISTRICT FINANCES





REVENUE BY SOURCE 2014-15				EXPENDITURE BY FUND 2014-15			
	District	District %	State %		District	District %	State %
Local Property Taxes	\$60,226,562	66.8	62.8	Education	\$56,100,738	63.6	73.4
Other Local Funding	\$10,284,547	11.4	4.6	Operations & Maintenance	\$8,776,994	10.0	6.4
General State Aid	\$11,886,905	13.2	16.3	Transportation	\$3,542,434	4.0	3.7
Other State Funding	\$4,249,800	4.7	8.6	Debt Service	\$5,167,828	5.9	8.1
Federal Funding	\$3,537,847	3.9	7.7	Tort	\$0	0.0	1.3
<b>TOTAL</b>	<b>\$90,185,661</b>			Municipal Retirement/ Social Security	\$2,237,981	2.5	2.1
				Fire Prevention & Safety	\$42,120	0.0	0.5
				Capital Projects	\$12,317,896	14.0	4.7
				<b>TOTAL</b>	<b>\$88,185,991</b>		

OTHER FINANCIAL INDICATORS				
	2013 Equalized Assessed Valuation per Pupil	2013 Total School Tax Rate per \$100	2014-15 Instructional Expenditure per Pupil	2014-15 Operating Expenditure per Pupil
District	\$564,596	2.72	\$7,676	\$15,530
State	**	**	\$7,712	\$12,821

\*\* Due to the way Illinois school districts are configured, state averages for equalized assessed valuation per pupil and total school tax rate per \$100 are not provided.

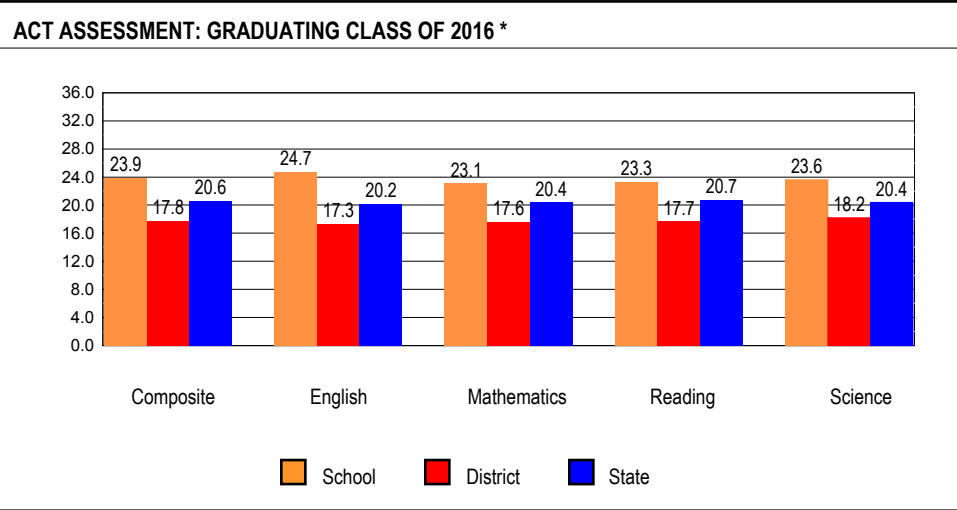
**Equalized assessed valuation** includes all computed property values upon which a district's local tax rate is calculated.

**Total school tax rate** is a district's total tax rate as it appears on local property tax bills.

**Instructional expenditure per pupil** includes the direct costs of teaching pupils or the interaction between teachers and pupils.

**Operating expenditure per pupil** includes the gross operating cost of a school district excluding summer school, adult education, bond principal retired, and capital expenditures.

## ACADEMIC PERFORMANCE



The number and percent of students taking the ACT are no longer reported since virtually every eleventh grade student takes the ACT as part of the PSAE.

\* Includes graduating students' most recent ACT Assessment scores from an ACT national test date or PSAE testing. All students whose scores are college reportable, both standard and extended time tests, are now included. State averages for ACT data are based on regular public schools and do not include private and special purpose schools.

READY FOR COLLEGE COURSE WORK	
School	80.4
District	23.8
State	46.4

PERCENT OF STUDENTS MET ACT BENCHMARKS					
	English	Math	Read	Science	ALL 4 Subjects
School	93.9	68.9	56.1	61.5	38.5
District	43.1	18.1	18.4	16.1	8.4
State	61.9	39.7	40.3	34.3	25.1

COLLEGE ENROLLMENT		
	12 Months	16 Months
School	70.7	73.7
District	55.5	60.4
State	67.8	71.4

FRESHMEN ON TRACK	
School	96.0
District	68.8
State	82.4

CTE ENROLLMENT	
School	112
District	1,593
State	280,517

ADVANCED COURSE WORK (AP/IB/DUAL CREDIT)			
	GRADE 10	GRADE 11	GRADE 12
School	143	147	122
District	234	246	284
State	28,457	54,910	70,923

ADVANCED PLACEMENT (AP) COURSE WORK			
Levels	Grade10	Grade11	Grade12
All			
School	1	146	122
District	75	224	258
State	21,667	40,133	50,356
White			
School	0	7	11
District	4	7	14
State	12,468	23,421	28,922
Black			
School	1	46	38
District	25	81	96
State	1,581	3,342	4,505
Hispanic			
School	0	84	66
District	43	122	135
State	3,839	8,233	10,844
Asian			
School	0	7	5
District	1	12	9
State	2,971	3,835	4,549
Native Hwaiian/Pacific Islander			
School	0	0	1
District	1	0	2
State	31	40	58
American Indian			
School	0	1	0
District	0	1	0
State	58	76	110
Two or More Races			
School	0	1	1
District	1	1	2
State	719	1,186	1,368
LEP			
School	0	0	0
District	2	2	4
State	68	197	286
Non LEP			
School	1	146	122
District	73	222	254
State	21,599	39,936	50,070
IEP			
School	0	0	0
District	1	4	0
State	184	504	873
Non IEP			
School	1	146	122
District	74	220	258
State	21,483	39,629	49,483

<b>Low Income</b>			
<b>School</b>	1	89	61
<b>District</b>	45	131	146
<b>State</b>	5,270	10,910	14,384
<b>Non Low Income</b>			
<b>School</b>	0	57	61
<b>District</b>	30	93	112
<b>State</b>	16,397	29,223	35,972

DUAL CREDIT COURSE WORK			
Levels	Grade10	Grade11	Grade12
<b>All</b>			
School	143	22	2
District	164	43	33
State	7,337	17,215	29,739
<b>White</b>			
School	6	2	1
District	6	2	1
State	4,262	11,960	20,330
<b>Black</b>			
School	42	3	1
District	52	12	21
State	1,107	1,668	2,746
<b>Hispanic</b>			
School	91	15	0
District	101	27	11
State	1,522	2,442	4,548
<b>Asian</b>			
School	4	2	0
District	4	2	0
State	240	622	1,250
<b>Native Hawaiian/Pacific Islander</b>			
School	0	0	0
District	1	0	0
State	6	18	37
<b>American Indian</b>			
School	0	0	0
District	0	0	0
State	17	33	79
<b>Two or More Races</b>			
School	0	0	0
District	0	0	0
State	183	472	749
<b>LEP</b>			
School	0	0	0
District	1	0	0
State	182	201	237
<b>Non LEP</b>			
School	143	22	2
District	163	43	33
State	7,155	17,014	29,502
<b>IEP</b>			
School	2	0	0
District	3	2	2
State	774	1,382	2,245
<b>Non IEP</b>			

School	141	22	2
District	161	41	31
State	6,563	15,833	27,494
<b>Low Income</b>			
School	98	9	1
District	114	27	21
State	3,390	5,855	9,056
<b>Non Low Income</b>			
School	45	13	1
District	50	16	12
State	3,947	11,360	20,683

### ADVANCE PLACEMENT (AP) EXAMS

GRADE 10				
	No of AP Exams Taken	No of AP Exams Passed	Took One or More AP Exams	Passed One or More AP Exams
School	1	0	1	0
District	68	9	68	9
State	26,796	17,202	19,158	12,498

GRADE 11				
	No of AP Exams Taken	No of AP Exams Passed	Took One or More AP Exams	Passed One or More AP Exams
School	215	84	134	61
District	327	113	210	82
State	88,794	57,291	34,932	23,741

GRADE 12				
	No of AP Exams Taken	No of AP Exams Passed	Took One or More AP Exams	Passed One or More AP Exams
School	370	198	107	88
District	668	247	228	120
State	155,180	102,273	38,306	28,190

### POST-SECONDARY REMEDIATION (CLASS OF 2014)

School	51
District	63
State	49



HIGH SCHOOL 4-YEAR GRADUATION RATE														
	Gender			Race / Ethnicity							LEP	Migrant	Students with Disabilities	Economically Disadvantaged
	All	Male	Female	White	Black	Hispanic	Asian	Native Hawaiian/Pacific Islander	American Indian	Two or More Races				
School	100.0	100.0	100.0	100.0	100.0	100.0								100.0
District	73.5	67.7	79.9	93.3	72.6	73.8								76.0
State	85.5	83.0	88.1	90.4	74.6	81.3								76.7

HIGH SCHOOL 5-YEAR GRADUATION RATE														
	Gender			Race / Ethnicity							LEP	Migrant	Students with Disabilities	Economically Disadvantaged
	All	Male	Female	White	Black	Hispanic	Asian	Native Hawaiian/Pacific Islander	American Indian	Two or More Races				
School	100.0	100.0	100.0	100.0	100.0	100.0								100.0
District	80.6	76.6	84.3	77.5	83.2	76.9								82.2
State	87.7	85.4	90.2	91.4	79.2	84.2								81.8

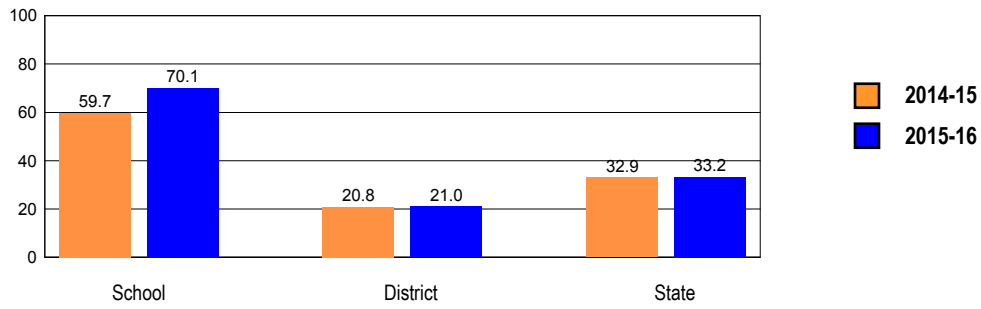
HIGH SCHOOL 6-YEAR GRADUATION RATE														
	Gender			Race / Ethnicity							LEP	Migrant	Students with Disabilities	Economically Disadvantaged
	All	Male	Female	White	Black	Hispanic	Asian	Native Hawaiian/Pacific Islander	American Indian	Two or More Races				
School	100.0	100.0	100.0	100.0	100.0	100.0								100.0
District	75.6	70.0	81.4	82.0	76.2	74.6								77.4
State	88.2	86.0	90.6	91.6	79.8	85.0								82.2

HIGH SCHOOL 7-YEAR GRADUATION RATE														
	Gender			Race / Ethnicity							LEP	Migrant	Students with Disabilities	Economically Disadvantaged
	All	Male	Female	White	Black	Hispanic	Asian	Native Hawaiian/Pacific Islander	American Indian	Two or More Races				
School	99.9	99.9	99.9	99.9	99.9	99.9								99.9
District	71.7	65.7	78.0	82.5	73.2	69.3								73.2
State	85.8	83.7	88.2	90.9	74.4	81.0								77.7

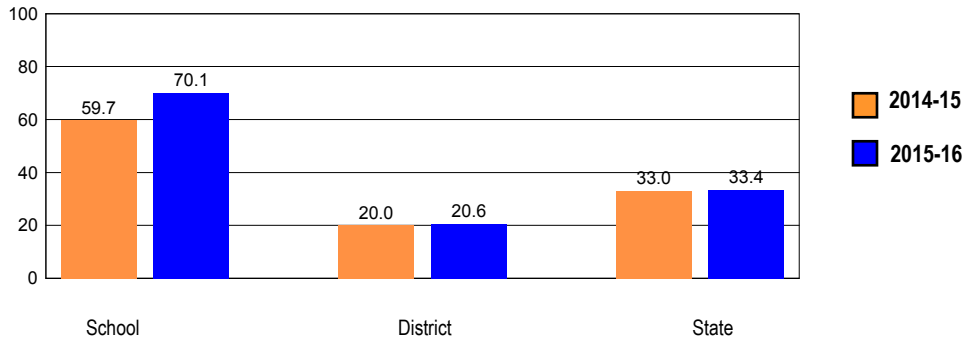
### OVERALL STUDENT PERFORMANCE

These charts present the overall percentage of state test scores categorized as meeting or exceeding the PARCC expectations or DLM-AA Standards for your district, and the state.

**OVERALL PERFORMANCE - ALL STATE TESTS**

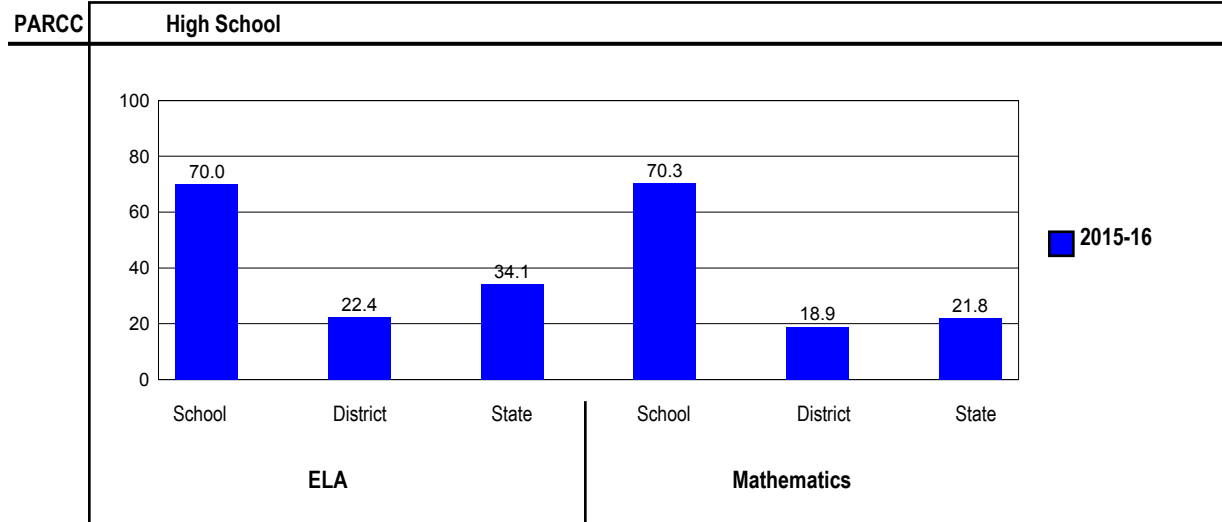


**PARTNERSHIP FOR ASSESSMENT OF READINESS FOR COLLEGE AND CAREERS (PARCC)**



**PARCC PERFORMANCE**

These charts present the overall percentage of state test scores categorized as meeting or exceeding the PARCC expectations or DLM-AA Standards for your district, and the state.



## PERFORMANCE ON STATE ASSESSMENTS

The PARCC is administered to students in grade 3 through 8 and high school. The DLM-AA is administered to students in grade 3 through 8 and 11 with disabilities whose Individualized Education Programs (IEPs) indicate that participation in the PARCC would not be appropriate.

Students with disabilities have an IEP (No Child Left Behind Act). An IEP is a written plan for a child with a disability who is eligible to receive special education services under the Individuals with Disabilities Education Act.

In order to protect students' identities, test data for groups of fewer than ten students are not reported.

PERCENTAGE OF STUDENTS NOT TESTED IN STATE TESTING PROGRAMS FOR ELA															
		Gender			Racial/Ethnic Background							LEP	Migrant	Students with Disabilities	Economically Disadvantaged
		All	Male	Female	White	Black	Hispanic	Asian	Native Hawaiian/Pacific Islander	American Indian	Two or More Races				
School	*Enrollment	200	69	131	9	67	115	7	0	1	1	0	0	0	127
	Reading	0.0	0.0	0.0		0.0	0.0								0.0
District	*Enrollment	958	481	477	21	478	438	14	2	3	2	31	0	150	617
	Reading	11.7	16.6	6.7	9.5	12.1	11.4	7.1				9.7		20.7	12.5
State	*Enrollment	1,050,307	537,851	512,454	512,582	177,823	272,642	49,633	1,043	2,886	33,656	87,711	198	147,577	527,950
	Reading	2.5	2.5	2.6	2.2	3.0	2.9	2.0	3.5	3.0	2.7	2.5	1.0	3.6	2.7

\* Enrollment as reported during the testing windows for grades 3 - 8 and high school.

Number of LEP Students who have attended schools in the U.S. for less than 12 months and are not assessed on the State's reading/language arts test: 0

PERCENTAGE OF STUDENTS NOT TESTED IN STATE TESTING PROGRAMS FOR MATHEMATICS															
		Gender			Racial/Ethnic Background							LEP	Migrant	Students with Disabilities	Economically Disadvantaged
		All	Male	Female	White	Black	Hispanic	Asian	Native Hawaiian/Pacific Islander	American Indian	Two or More Races				
School	*Enrollment	212	77	135	10	69	123	8	0	1	1	0	0	0	133
	Mathematics	0.0	0.0	0.0	0.0	0.0	0.0								0.0
District	*Enrollment	952	493	459	20	432	479	14	2	3	2	73	0	155	622
	Mathematics	9.6	13.2	5.7	10.0	8.1	10.9	0.0				19.2		14.8	10.9
State	*Enrollment	1,025,813	525,396	500,415	494,198	176,422	271,200	47,430	1,046	2,841	32,624	91,569	202	145,620	524,025
	Mathematics	2.5	2.5	2.6	2.1	3.2	3.0	1.5	3.5	3.0	2.6	2.0	1.0	3.8	2.8

\* Enrollment as reported during the testing windows for grades 3 - 8 and high school.

## Partnership for Assessment of Readiness for College and Careers (PARCC)

Each Performance Level is a broad, categorical level defined by a student's overall scale score and used to report overall student performance by describing how well students met the expectations for their grade level/course. Each Performance Level is defined by a range of overall scale scores for the assessment. There are five Performance Levels for PARCC assessments:

- Level 1: Did not yet meet expectations
- Level 2: Partially met expectations
- Level 3: Approached expectations
- Level 4: Met expectations
- Level 5: Exceeded expectations

Students performing at levels 4 and 5 met or exceeded expectations, have demonstrated readiness for the next grade level/course and, ultimately, are on track for college and careers. Performance Level Descriptors (PLDs) describe the knowledge, skills, and practices that students should know and be able to demonstrate at each Performance Level in each content area (ELA/L and mathematics), and at each grade level/course. PLDs are available at <http://avocet.pearson.com/PARCC/Home>.

## High School

### High School - All

Levels	ELA					Mathematics				
	1	2	3	4	5	1	2	3	4	5
School	3.5	6.0	20.5	55.0	15.0	2.8	7.5	19.3	62.3	8.0
District	42.9	18.4	16.3	18.4	4.0	56.1	16.3	8.7	16.9	2.0
State	19.2	20.9	25.8	28.3	5.8	21.5	29.5	27.2	21.1	0.7

### High School - Gender

Levels	ELA					Mathematics					
	1	2	3	4	5	1	2	3	4	5	
Male	School	7.2	8.7	15.9	53.6	14.5	0.0	9.1	18.2	59.7	13.0
	District	52.5	18.4	13.0	13.0	3.1	62.6	16.0	6.8	12.1	2.4
	State	25.0	22.9	24.9	23.4	3.7	23.8	29.9	25.6	19.8	0.8
Female	School	1.5	4.6	22.9	55.7	15.3	4.4	6.7	20.0	63.7	5.2
	District	34.4	18.3	19.3	23.2	4.8	49.8	16.5	10.6	21.5	1.7
	State	13.1	18.8	26.7	33.4	8.0	19.1	29.1	28.8	22.4	0.6

**High School - Racial/Ethnic Background**

Levels	ELA					Mathematics				
	1	2	3	4	5	1	2	3	4	5
White	School					0.0	0.0	20.0	40.0	40.0
	District	16.7	16.7	16.7	38.9	11.1	23.5	17.6	11.8	23.5
	State	13.5	17.5	26.2	35.1	7.8	16.0	25.5	30.2	27.3
Black	School	4.5	6.0	20.9	56.7	11.9	4.3	4.3	23.2	63.8
	District	53.2	21.9	11.6	11.1	2.2	65.8	13.6	8.1	11.7
	State	33.3	28.6	23.3	13.4	1.3	35.5	36.2	19.6	8.7
Hispanic	School	3.5	7.0	20.9	53.0	15.7	2.4	10.6	17.9	62.6
	District	34.9	15.3	21.2	23.5	5.0	50.4	18.7	8.6	20.4
	State	24.5	25.0	27.5	20.8	2.1	23.2	33.4	27.0	16.1
Asian	School									
	District	0.0	0.0	23.1	61.5	15.4	14.3	14.3	21.4	35.7
	State	6.3	11.4	21.1	43.4	17.8	8.3	18.3	29.1	40.8
Native Hawaiian/Pacific Islander	School									
	District	7.2	18.0	29.7	37.8	7.2	11.2	31.8	23.4	31.8
	State									1.9
American Indian	School									
	District									
	State	23.7	19.7	30.6	21.2	4.8	25.6	31.9	24.2	18.1
Two or More Races	School									
	District									
	State	16.7	19.2	25.1	30.2	8.8	21.3	27.9	26.5	23.3

**High School - Economically Disadvantaged**

Levels	ELA					Mathematics				
	1	2	3	4	5	1	2	3	4	5
Free/Reduced Price Lunch	School	3.9	8.7	21.3	55.1	11.0	2.3	9.8	20.3	63.9
	District	43.0	20.2	16.8	17.0	3.0	59.6	13.9	8.7	16.9
	State	28.0	26.1	25.6	18.4	1.9	28.0	34.3	24.2	13.3
Not Eligible	School	2.7	1.4	19.2	54.8	21.9	3.8	3.8	17.7	59.5
	District	42.6	15.2	15.5	20.9	5.7	49.8	20.5	8.8	16.8
	State	12.4	16.8	25.9	36.0	8.9	15.3	25.0	30.0	28.5